

The rolling hills of Threaded Ecologies are part of the designated agricultural reserve in Montgomery County, Maryland. Rural landscapes, such as this one, perform vital ecological, economic, and cultural functions. Cropland, forests, pastures, and rivers that sustain wildlife corridors and provide critical habitat define the agricultural reserve that cradles the project site.

The house on the 16.75-acre property is sited on the axis with Sugarloaf Mountain to allow for vast, magnificent views. The landscape design was inspired by the complex ecological systems of the Piedmont Physiographic region, the stunning views of Sugarloaf Mountain, and the field with 'floating' cylindrical hay bales.

The client's vision was a place for respite with land stewardship in mind to support biodiversity and connect wildlife corridors. The project was a cross-disciplinary collaboration between the client, landscape architect, meadow consultant, builder, meadow installation crew, planting team, and the garden management team. The use of local materials and native plants and carefully considered foreground, middle ground, and background blend the design with the rural characteristics of the site. The garden provokes a meaningful interaction with nature built on curiosity, discovery, and mystery...



ASLA  
POTOMAC  
2023 Awards

**Threaded Ecologies**  
Moody Graham

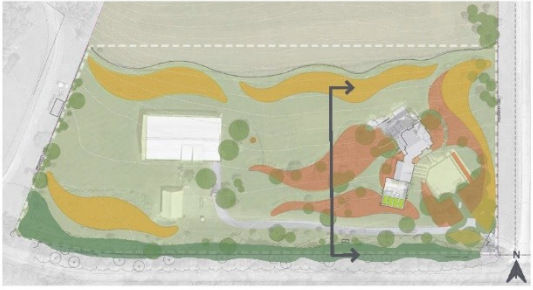


**CULTIVATE**  
health and well-being

**COLLABORATE**  
with clients, meadow consultant, meadow installation crew, builder, hardscape contractor, planting crew, maintenance



**RESPECT**  
local ecologies and communities



- NATIVE PLANTING HABITAT
- MEADOW HABITAT
- HEDGE ROW HABITAT
- LAWN

KEY PLAN





ASLA  
POTOMAC  
2023 Awards

**Threaded Ecologies**  
Moody Graham

# CONTRIBUTIONS

**Landscape Architect: Moody Graham**

**Mila Antova, Principal**

**Architect: Stoiber+Associates**

**Civil Engineer and Site Survey: Snider & Associates**

**Meadow Consultant, Installation, and Maintenance: Larry Weaner Landscape Associates**

**Builder/General Contractor: Summit Design & Construction, Inc**

**Excavation and Grading: Gebcon Corporation**

**Planting Installation: Oldetowne Landscape Architects**

**Willow Panels: The Willow Farm**

**Garden Maintenance: Hedge Garden Care**

**Photographs by Allen Russ**



**Photograph of Client On-Site**



**Meadow Consultation with Larry Weaner Landscape Associates**

**Threaded Ecologies**

Moody Graham